

JET

J-349V

PORTABLE BANDSAW

J-349V..... 50000333M 1~230V, 50Hz

PARTS LIST

JPW (Tool) AG.

Tämperlistrasse 5
CH-8117 Fällanden
Switzerland

Phone +41 44 806 47 48

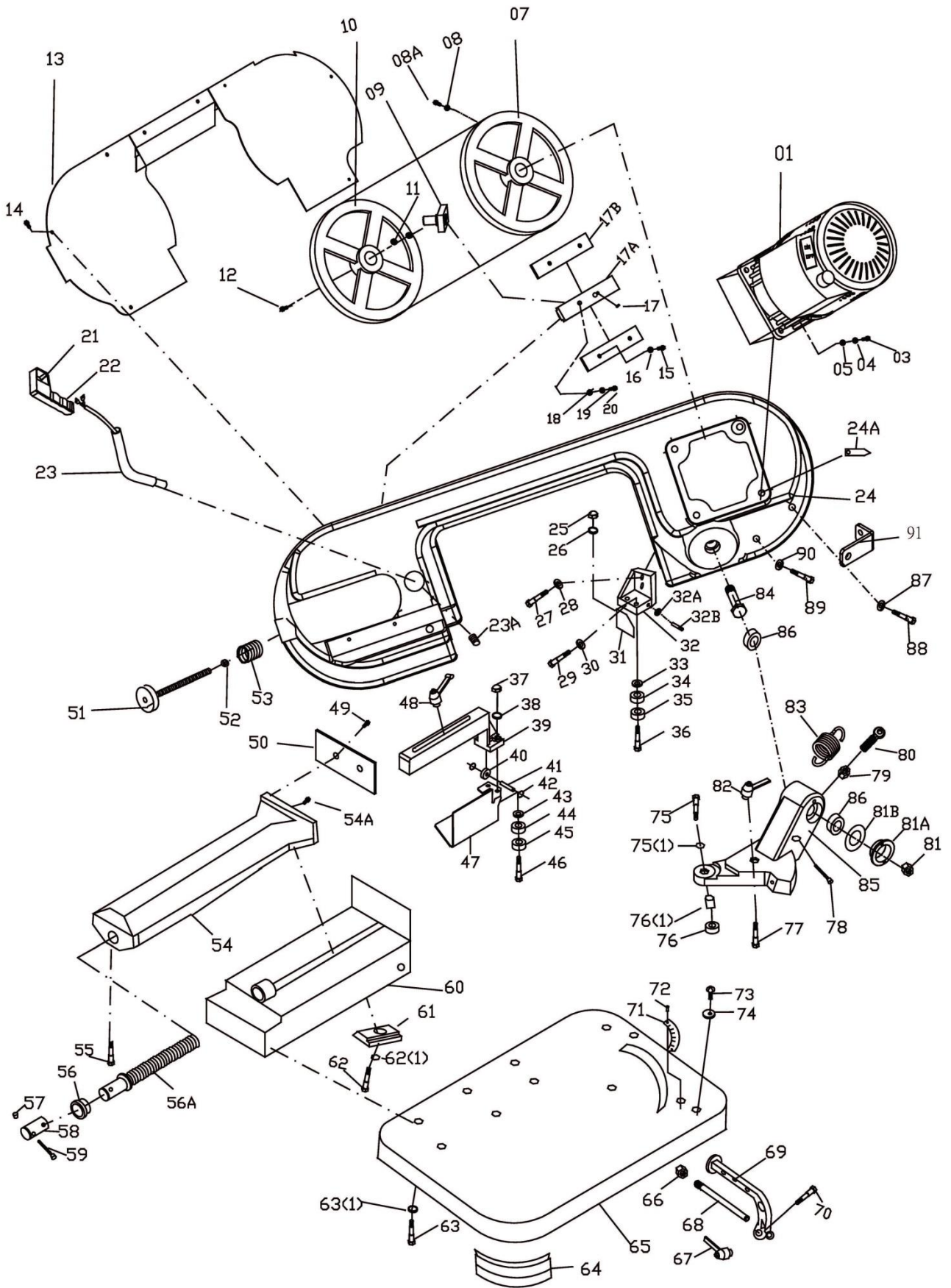
Fax +41 44 806 47 58

www.jettools.com

P-50000333M

2015-03

J-349V Bow saw breakdown

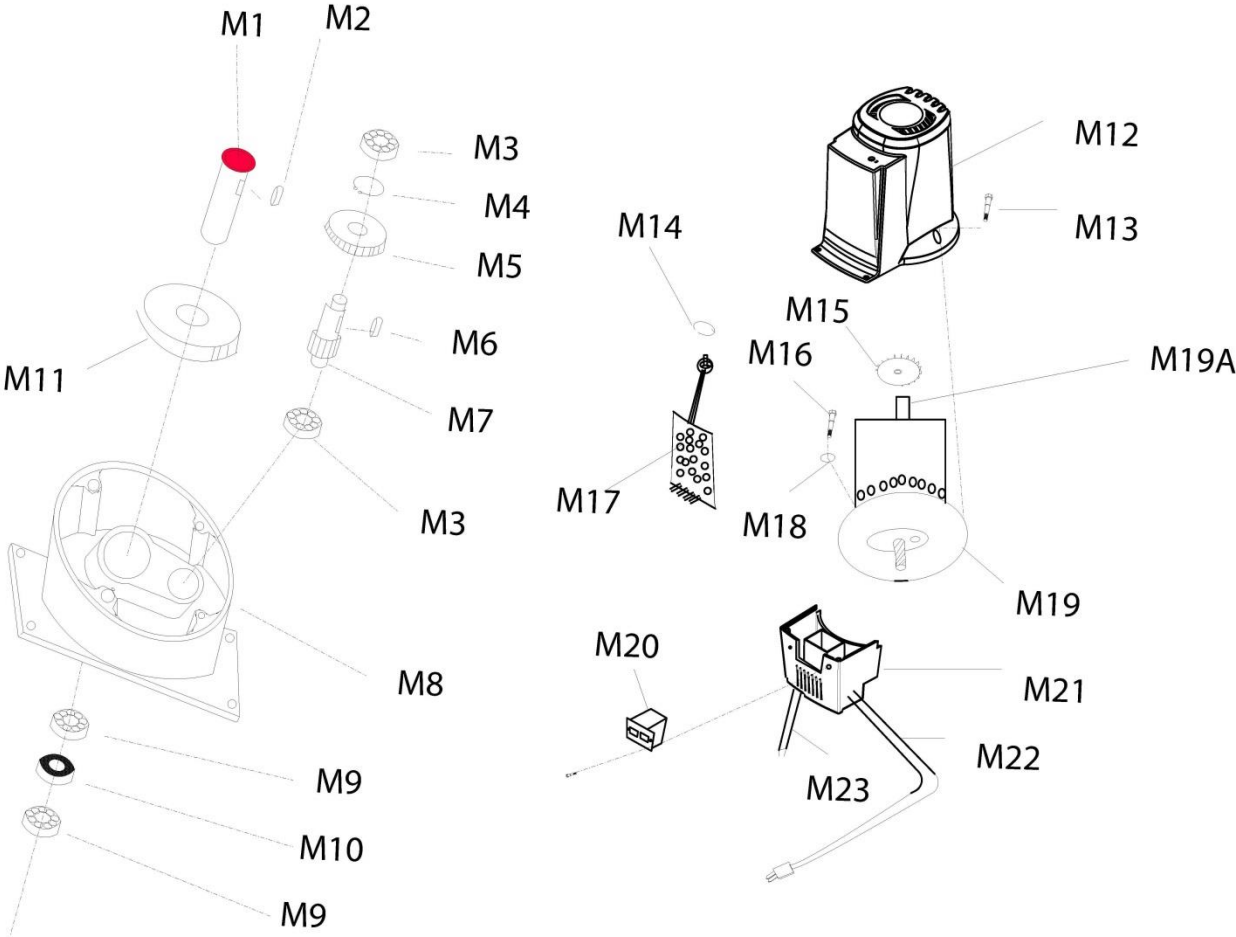


J-349V Bow saw Assembly

Index No.	Part No.	Description	Size	Q'ty
1	J-349V-01	Motor		1
3	J-349V-03	Screw		4
4	J-349V-04	Spring Washer		4
5	J-349V-05	Washer		4
7	J-349V-07	Motor Flywheel		1
7-1	J-349V-07-1	Key	4x18	1
7-2	J-349V-07-2	Washer	1/4"x25x3	1
7-3	J-349V-07-3	Collar	6202	1
8	J-349V-08	Washer	M6	1
8A	J-349V-08A	Screw	M6x15	1
9	J-349V-09	Special Pin		1
10	J-349V-10	Return Flywheel		1
11	J-349V-11	Bearing	6202ZZ	2
12	J-349V-12	Screw		1
13	J-349V-13	Body Cover		1
14	J-349V-14	Screw		4
15	J-349V-15	Screw		4
16	J-349V-16	Washer		4
17	J-349V-17	Set Screw		1
17A	J-349V-17A	Blade Tension Sliding Block		1
17B	J-349V-17B	Slide		2
18	J-349V-18	Washer		4
19	J-349V-19	Spring Washer		4
20	J-349V-20	Screw		4
22	HS201402	Head Lever Handgrip (including 21 &22)		1
23	J-349V-23	Tube		1
24	J-349V-24	Body Frame		1
24A	J-349V-24A	Platen		4
25	J-349V-25	Nut		2
26	J-349V-26	Washer		2
27	J-349V-27	Screw	M6x25	2
28	J-349V-28	Washer	M6x16x1.5	2
28-1	J-349V-28-1	Washer	M6	2
29	J-349V-29	Screw		1
30	J-349V-30	Washer		1
31	J-349V-31	Chip Fence		1
32	J-349V-32	Fixed Blade Guide Plate		1
32A	J-349V-32A	Bearing	625	1
32B	J-349V-32B	Pin	5x31	1
33	J-349V-33	Washer		2
34	J-349V-34	Bearing	607	2
35	J-349V-35	Bearing	607	2
36	J-349V-36	Bias Axis		2
37	J-349V-37	Nut		2
38	J-349V-38	Washer		2
39	J-349V-39	Arm		1
40	J-349V-40	Bearing	625	2
41	J-349V-41	Pin	5x23.5	2
42	J-349V-42	Washer		2
43	J-349V-43	Washer		2
44	J-349V-44	Bearing	607	2
45	J-349V-45	Bearing	607	2
46	J-349V-46	Bias Axis		2
47	J-349V-47	L. Blade Guard		1
48	J-349V-48	Bolt		1
49	J-349V-49	Screw		1
50	J-349V-50	Vice Plate		1
51	J-349V-51	Handle Wheel	M10x80	1

Index No.	Part No.	Description	Size	Q'ty
53	J-349V-53	Washer	M10	12
54	J-349V-54	Vise		1
54A	J-349V-54A	Screw		1
55	J-349V-55	Screw		1
56	J-349V-56	Bushing		1
56A	J-349V-56A	Acme Screw		1
57	J-349V-57	Knob		2
58	J-349V-58	Shaft Bushing		1
59	J-349V-59	Handle Rod		1
59-1	HS201402	Handle		1
60	J-349V-60	Fence Base		1
61	J-349V-61	Locking Seat		1
62	J-349V-62	Screw		1
62-1	J-349V-62-1	Washer		1
63	J-349V-63	CAP Screw	M8x16	6
63-1	J-349V-63-1	Washer	M8	6
64	J-349V-64	Rubber Pad		4
65	J-349V-65	Base		1
66	J-349V-66	Nut		1
67	J-349V-67	Bolt		1
68	J-349V-68	Rod Stock Stop		1
69	J-349V-69	Stop Bracket		1
70	J-349V-70	Screw		1
71	J-349V-71	Scale		1
72	J-349V-72	Screw		1
73	J-349V-73	CAP Screw	M6x12	2
74	J-349V-74	Washer	M6x21.5x3	2

J-349V Motor breakdown



J-349V Motor Assembly

Index No.	Part No.	Description	Size	Q'ty
75	J-349V-75	CAP Screw	M6x40	1
75-1	J-349V-75-1	Washer	1/4"x16x1.5	1
76	J-349V-76	Nut	M6	1
76-1	J-349V-76-1	Bushing		1
76-2	J-349V-76-2	Washer	5/16"x23x3	1
77	J-349V-77	Screw	3/8"x1/2	1
78	J-349V-78	Locking Pin		1
78-1	J-349V-78-1	E-Ring	#7	1
79	J-349V-79	Nut	M12	1
80	J-349V-80	Nut	M12	1
81	J-349V-81	Nut	M12	1
81A	J-349V-81A	Bushing	M12x28x2	1
82	J-349V-82	Bolt		1
82-1	J-349V-82-1	Washer	3/8"x25x2	1
83	J-349V-83	Spring		1
84	J-349V-84	Axis		1
85	J-349V-85	Miter plate		1
86	J-349V-86	Washer		1
M1	J-349V-M1	Main shaft		1
M2	J-349V-M2	Key		1
M3	J-349V-M3	Bearing	607	2
M4	J-349V-M4	C-ring		1
M5	J-349V-M5	Gear		1
M6	J-349V-M6	Key		1
M7	J-349V-M7	Gear Shaft		1
M8	J-349V-M8	Gear Box		1
M9	J-349V-M9	Bearing	6202	2
M10	J-349V-M10	Oil Seal		1
M11	J-349V-M11	Gear		1
M12	J-349V-M12	UP Cover		1
M13	J-349V-M13	Screw	M4x8	1
M14	J-349V-M14	Nut		1
M15	J-349V-M15	Fan		1
M16	J-349V-M16	Screw	M5x20	1
M17	J-349V-M17	Electrical Board		1
M18	J-349V-M18	Oil Seal		1
M19	J-349V-M19	Motor		1
M20	J-349V-M20	Switch	KJD-20	1
M21	J-349V-M21	Down Cover		1
M22	J-349V-M22	Plug		1
M23	J-349V-M23	Handel Wire		1

J-349V...50000333M 1~230V, 50Hz

